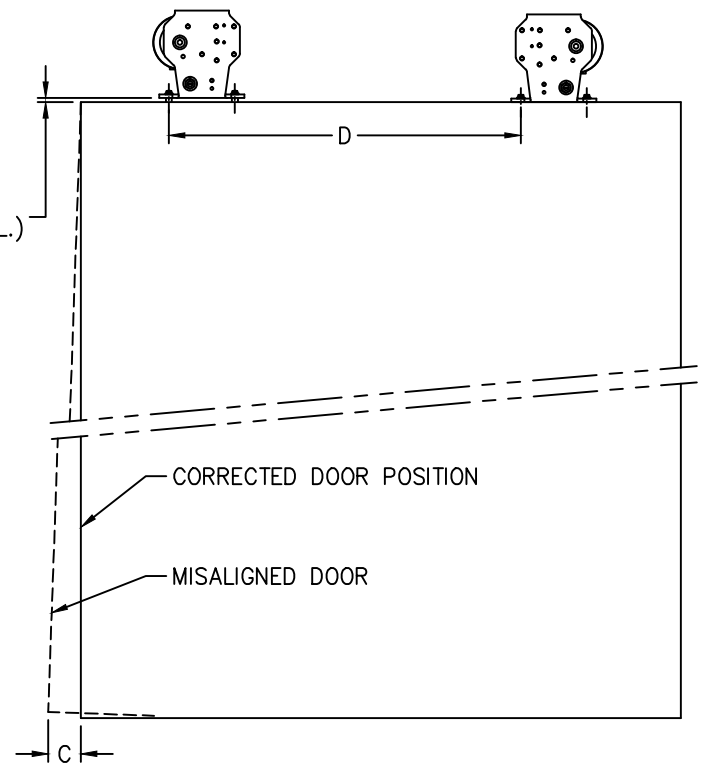


D	C
31	$\frac{1}{16}$
28	$\frac{1}{8}$
25	
22	
19	
16	$\frac{3}{16}$
13	
10	

THIS TABLE IS BASED ON A  $\frac{1}{32}$  SHIM  
PLACED BETWEEN THE SHEAVE AND  
THE TOP OF THE DOOR.



TO CORRECT DOOR MISALIGNMENT  
FIGURE 2

DOOR OPENING	A	B
45-48	52	12
41-44	48	$10\frac{1}{2}$
36-40	48	9
28-35	42	9
22-27	36	$7\frac{1}{2}$

NOTE: 36x84 DOOR OPENING SHOWN  
RIGHT HAND SHOWN  
LEFT HAND OPPOSITE

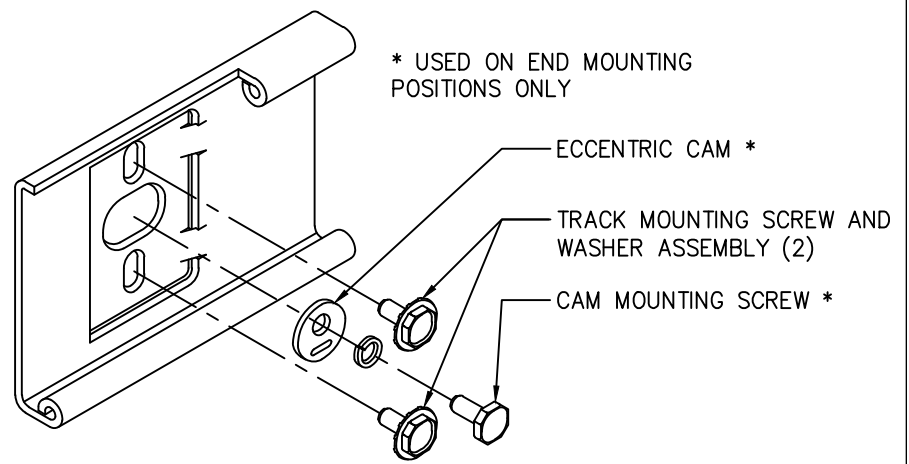
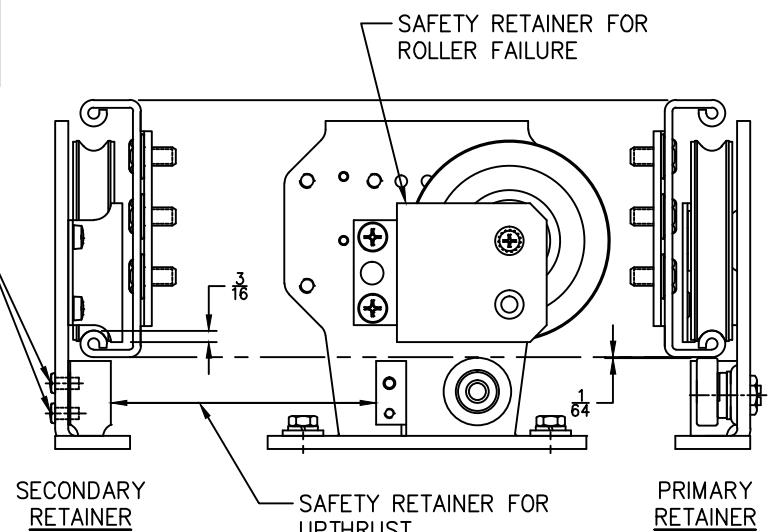


FIGURE 3

TO ASSEMBLE, REMOVE UPPER  
SCREW AND ROTATE RETAINER  
ABOUT LOWER SCREW. THEN  
TIGHTEN BOTH SCREWS.



RIGHT HAND SHEAVE  
FIGURE 4

EXISTING FASCIA  
(CUT DOWN IN FIELD)

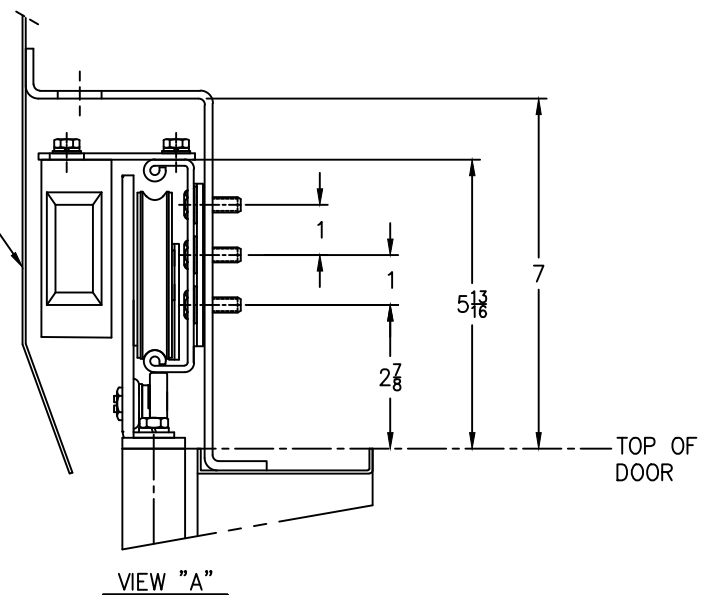


FIGURE 1

DETAIL "A"

INSTALLATION INSTRUCTIONS:

1. MOUNT HANGERS TO DOOR WITH UPTHURST ROLLERS IN LOWEST POSITION.
2. MOUNT TRACK TO HEADER AND SET ECCENTRIC CAM SO THAT THE TRACK IS IN THE LOWEST POSITION. HAND TIGHTEN ALL SCREWS. SEE FIGURE 3.
3. HANG DOOR ON TRACK AND ROTATE ECCENTRIC CAM TO GIVE DOOR REQUIRED SILL CLEARANCE. ADJUST UPTHURST ROLLERS TO CLEAR TRACK BY APPROXIMATELY  $\frac{1}{64}$  INCH.
4. CHECK DOOR MISALIGNMENT IN OPENED AND CLOSED POSITION AND CORRECT IF REQUIRED. SEE FIGURE 2.
5. IF REQUIRED, READJUST THE ECCENTRIC CAM TO GIVE DOOR REQUIRED SILL CLEARANCE.
6. TIGHTEN ALL SCREWS.

- WARNING -  
G.A.L. PROPRIETARY INFORMATION  
REPRODUCTION AND/OR USE OF ALL OR ANY  
PART OF THIS (THESE) PAGE(S) OR DRAWING(S)  
OR THE INFORMATION HEREIN, WITHOUT THE  
EXPRESS PERMISSION OF G.A.L. MANUFACTURING  
CORPORATION IS STRICTLY PROHIBITED BY LAW.  
- VIOLATORS WILL BE PROSECUTED -

REV	DESCRIPTION	DATE
A	UPDATE TEMPLATE & SPRING CLOSER BASE	10-15-13



SINGLE SPEED HATCH DOOR ASSEMBLY  
TYPE "A" HANGER WITH REEL OR SPRING DOOR CLOSER 22-48 DOOR OPENING

G.A.L. MANUFACTURING CORP.  
50 E. 153rd STREET, BRONX, N.Y. 10451  
PHONE: (718) 292-9000, FAX: (718) 292-2034  
www.GAL.com, info@GAL.com

DATE 11-3-94  
DOCUMENT No.  
8251

REV  
A