

TOUCH-TO-GO

A POWERFUL PARTNERSHIP

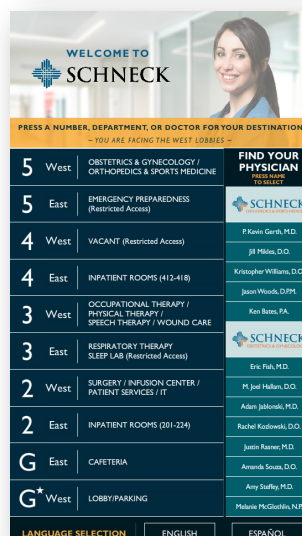
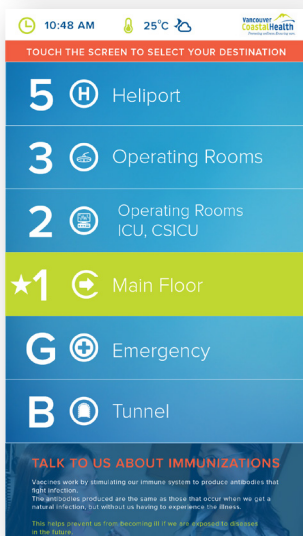
VANTAGE FIXTURES | DESIGNED & MADE BY **MAD**

Hospital Elevator Touchscreen

The Touch-To-Go elevator touchscreen system is a digital solution that replaces traditional pushbuttons while turning elevator wait time into a dynamic, visual experience.

Bold, vibrant, colorful graphics provide high contrast, large digits and touch areas making the screen easy to read and use. Universal symbols allow for ease of use in a multilingual facility.

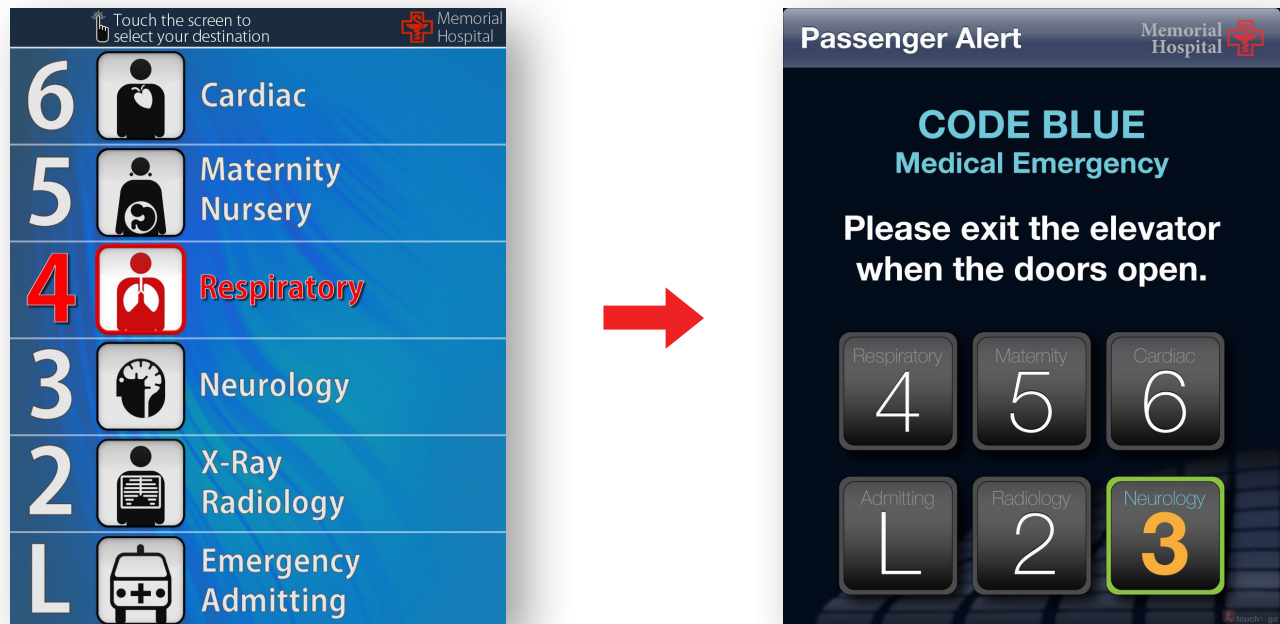
The smooth glass surface is easy to clean with any glass-approved solution. Unlike mechanical pushbuttons, contaminants will not get trapped with a liquid-tight bezel. Calls can be placed by touch with a gloved or covered hand. This, along with effective cleaning, will prevent the transfer of germs.



Medical Emergency

Because the touchscreen only replaces the call buttons, code blue (medical emergency) activation and operation remains unchanged. The Touch-To-Go system has priority inputs that can trigger a change in the graphics when code blue is activated; the graphics automatically change to a simplified layout including instructions for passengers.

Floor numbers will still be present to allow medical personnel to choose the required floor once code blue has been activated by a key switch or card reader in the car.



Features

- ✓ Remote admin and updateability
- ✓ 21" & 15" HD LED display with a viewing angle of 178°
- ✓ Multiple screen sizes available
- ✓ Vandal-resistant, code compliant and easy to clean
- ✓ Fully customizable graphics and themes
- ✓ Operated with finger touch or with a gloved hand
- ✓ Interface with any elevator controller
- ✓ Video, live video, live news ticker, weather and 2-way video capable

This publication is for general informational purposes only. Product design is subject to change without notice. Actual product colors and finishes may vary.

Copyright © 2020 MAD Elevator Inc.

vantageelevation.com
(347) 226-4558
sales@vantageelevation.com