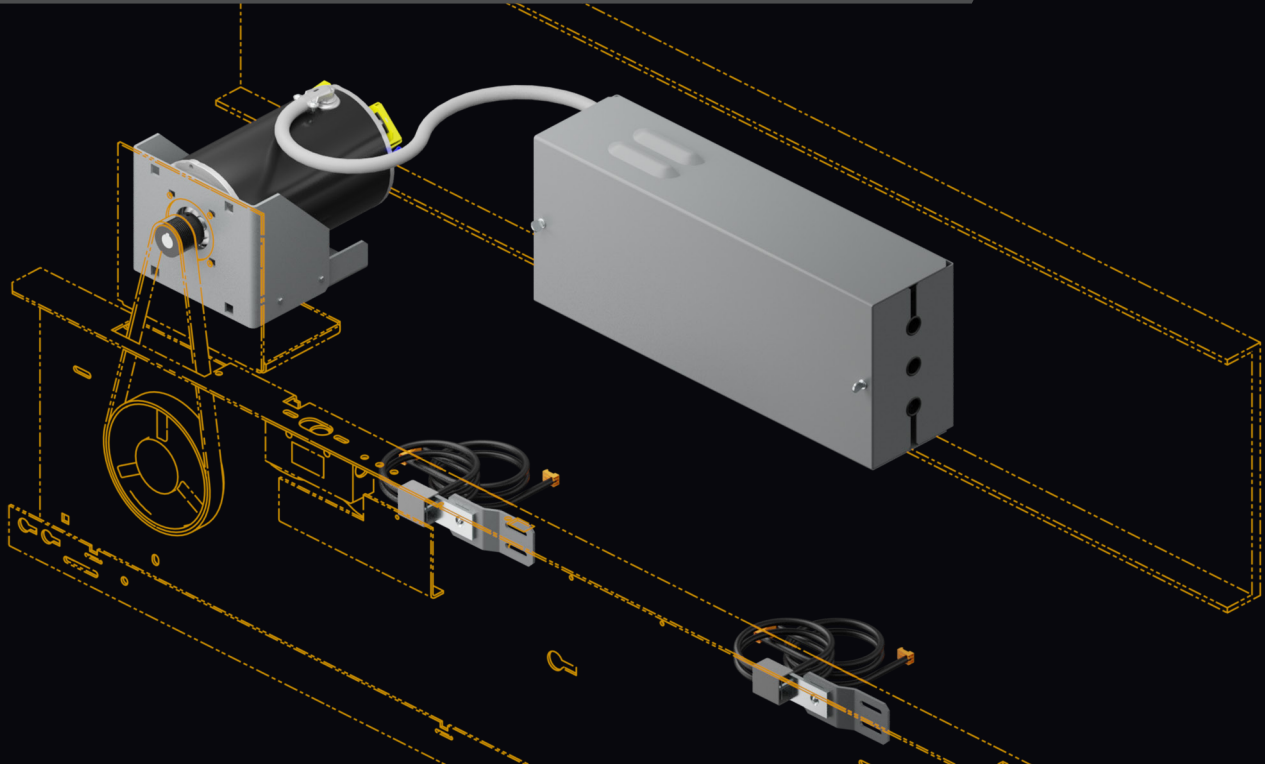


Conversion Kit: QKS16 to MOVFE-HL



PRE-ENGINEERED GAL CONVERSION BOLT-ON KIT for the QKS16 and IDD Linear Series Operators

In the past few years, savvy customers have found a way to add on the MOVFE-HL Linear operator to an existing QKS16. While it is a solution to dealing with the obsolete operator, it requires the customer to not only purchase a box of parts from GAL and modify them, but also source wiring harnesses and additional hardware, as well as fabricate mounting brackets for the motor and sensors and figure this out without instructions.

This kit brings together all needed parts for the installation from start to finish, where a customer can purchase (1) part number and have everything they need.

We've done the hard work for you!!

STANDARD FEATURES

- These new kits are proven technology, built on a universal standard, non-proprietary platform (MOVFE-HL)
- CSA/UL Certified where applicable
- Used on the QKS16 Linear and IDD Operator series (QKS16, QKS16VF and IDD) found on HX, 321A, 330A, and 400A controllers
- Specify the operator and voltage only – No surveys!
- Wiring Diagrams included
- Kits Stocked in house at GAL, quick turn around for emergencies
- The kits each contain an easily learned tool and software
- These kits allow the retention of the existing header, tracks and hangers, clutch and interlocks
- Smoother and quieter operation



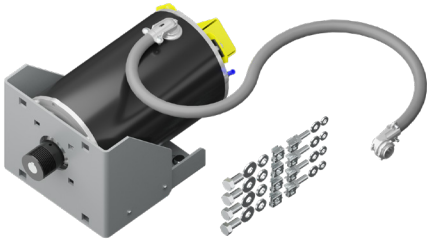
Conversion Kit: QKS16 to MOVFE-HL

MODERNIZATION CONVERSION KITS

KIT01-5001N - QKS16VF to MOVFE-HL KIT, 230 Volts

KIT01-5002N - QKS16 to MOVFE-HL KIT, 115 Volts

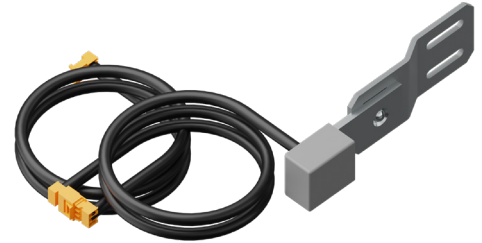
CONTENTS OF EACH KIT



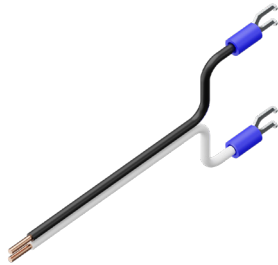
MOTOR ASSEMBLY WITH SPECIAL MOUNT BRACKET AND HARDWARE



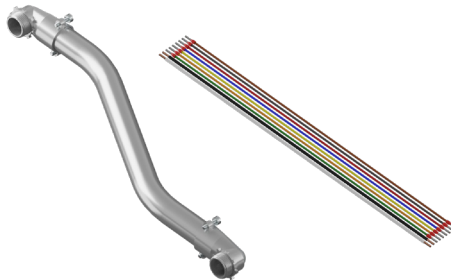
MOVFE DRIVE ASSEMBLY w/ PARAMETER UNIT (230V or 115V)



MOVFE SENSOR ASSEMBLY WITH HARNESS EXTENSION



GATE SWITCH WIRE HARNESS



MAIN CONTROLLER WIRE HARNESS AND CONDUIT



MOUNTING HARDWARE



CONVERSION INSTRUCTIONS

Scan the QR code to checkout our other Mod Kits



Schindler (R) is a registered trademark of INVENTIO AG. G.A.L. Manufacturing Company, LLC doing business as Vantage Group is not associated with or sponsored by INVENTIO AG. INVENTIO AG has not endorsed this product.



50 E. 153rd St.
Bronx, NY 10451-2104
Ph: 718.292.9000
Fax: 718.292.2034

info@gal.com
www.gal.com
sales@vantageelevation.com
www.vantageelevation.com



REGIONAL SERVICE CENTERS

Chicago 877.300.5830
New York 917.336.4597
Miami 877.241.9354
L.A. 877.300.5816
Dallas 469.706.9316
Toronto 888.425.2262