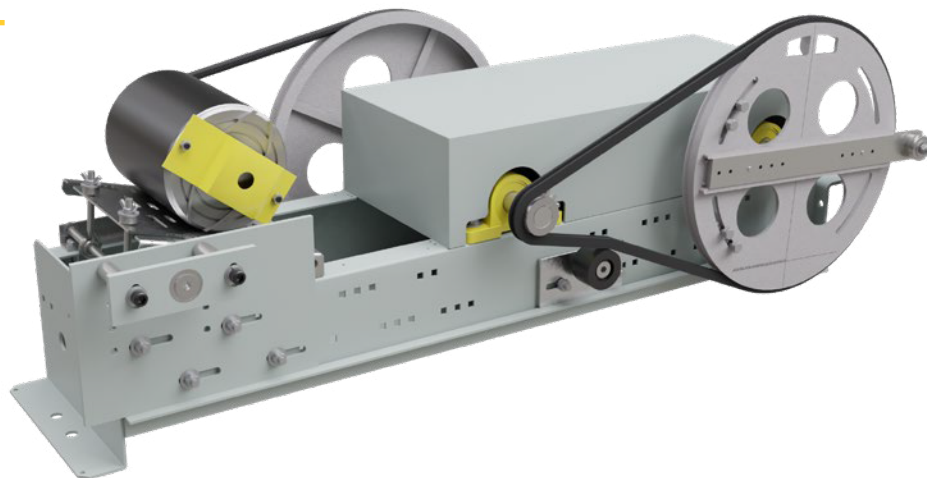


# MOVFE-HH

## Harmonic Door Operator

### HEAVY-DUTY, CLOSED LOOP DOOR OPERATOR

Robust performance for heavy doors and the most demanding applications. Ideal for both new installations and modernization projects



#### BENEFITS

- Closed loop circuitry, utilizing both VVVF and encoder feedback ensures trusted GAL harmonic performance and offers better door control
- 1/2 HP motor to move doors up to 2000 pounds
- Conversions from existing ECI 895, EC 1000 or any ECI chassis installations are quick and easy
- Reduced-mode operation for open/close/encoder faults minimizes after-hours trouble calls
- 'Plug-and-Play' light curtain capability
- Pivot points use precision long-life bearings for smooth operation



A VANTAGE Company



A VANTAGE Company

6500 Gottardo Court  
Mississauga, ON L5T 2A2  
Ph: 416.747.7967  
Fax: 416.747.9035  
info@galcanada.com  
www.galcanada.com

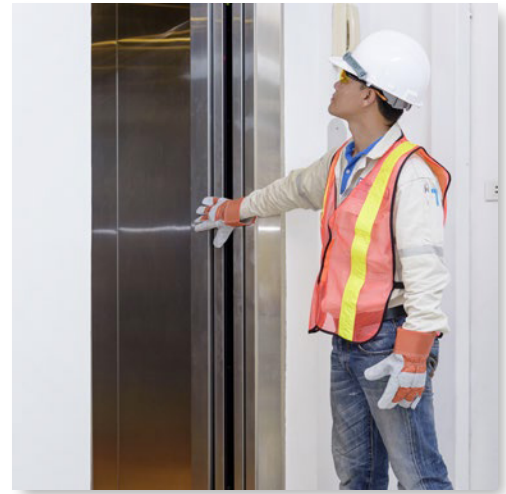
50 E. 153rd St.  
Bronx, NY 10451-2104  
Ph: 718.292.9000  
Fax: 718.292.2034  
info@gal.com  
www.gal.com

#### REGIONAL SERVICE CENTERS

Miami – 877.241.9354  
Chicago – 877.300.5830  
Los Angeles – 877.300.5816  
New York – 917.336.4597  
Dallas – 469.706.9316  
Toronto – 888.425.2262

## FEATURES

- Controller input: 24-230V AC/DC
- Non-Contact sensors: optical and hall-effect
- LED indicators: on main board to display status of important functions
- Toggle switches for manual testing
- Parameter unit (keypad programmer), with LCD display included to adjust, monitor, copy and upload parameters, and to learn the door width
- Serial communication: CAN [Controlled Area Network] protocols can be used with all 'GALaxy' controls



## ELECTRICAL SPECIFICATIONS

POWER SUPPLY	MOTOR	INPUTS
115 VAC / 230 VAC	1/2 HP motor tested to move up to 2000 pounds	Universal inputs (accepts control signals in form of dry contacts or signal voltages from 24V to 230V, AC or DC)

