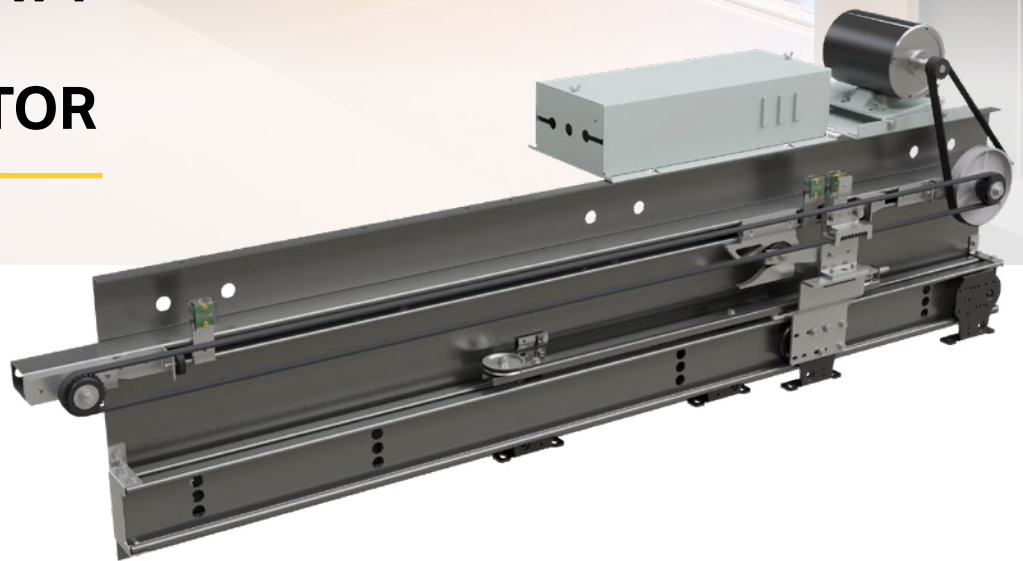


MOVFE-HL

Linear Door Operator

A ROBUST, HEAVY-DUTY LINEAR DOOR OPERATOR

Designed to be highly adaptable, quiet, reliable, and provide added muscle to handle any job



BENEFITS

- 'Learns' door width and optimizes control of elevator doors
- 'Plug-and-Play' infrared detector edges (NPN and PNP)
- Auto-fallback to reduce power mode if sensors or encoder fail
- Serial communication option
- Universal inputs and outputs
- Over-torque and over-speed detections
- Keypad also available



A VANTAGE Company



A VANTAGE Company

6500 Gottardo Court
Mississauga, ON L5T 2A2
Ph: 416.747.7967
Fax: 416.747.9035
info@galcanada.com
www.galcanada.com

50 E. 153rd St.
Bronx, NY 10451-2104
Ph: 718.292.9000
Fax: 718.292.2034
info@gal.com
www.gal.com

REGIONAL SERVICE CENTERS

Miami – 877.241.9354
Chicago – 877.300.5830
Los Angeles – 877.300.5816
New York – 917.336.4597
Dallas – 469.706.9316
Toronto – 888.425.2262

FEATURES

- Double-feedback closed-loop system constantly monitors distance and velocity
- CSA Certified. B44.1/ASME-A17.5
- Complies with CE and IEEE safety standards: EN61000-4-2-6, EN61000-4-8, IEEE STD C62-45-1992 (EMC conformity report available)
- Non-Contact hall-effect sensors
- LEDs on main board indicate critical function status
- Pluggable input modules, output relays, and connectors
- Toggle switches provided for manual operation, diagnostics, and operational verification, regardless of condition of control wiring to elevator controller
- Keypad programmer with LCD display to adjust, monitor, copy, and upload parameter sets and learn door width distance
- Over-torque and over-speed detection and restriction limits are defined for easy adjustment and code compliance
- NPN and PNP linear curtains connected directly to Door Operator (Plug-and-Play)
- CAN (Controlled Area Network) and other protocols can be used for serial communication
- Handles up to 2,000 lbs total door weight

ELECTRICAL SPECIFICATIONS

POWER SUPPLY	MOTOR	INPUTS	OUTPUTS
230 VAC / 115 VAC	1/2 HP AC motor (accommodates most door loads, friction and wind pressures)	Universal inputs (accept control signals in form of dry contacts or signal voltages from 24V to 230V, AC or DC)	10A, 230 VAC

