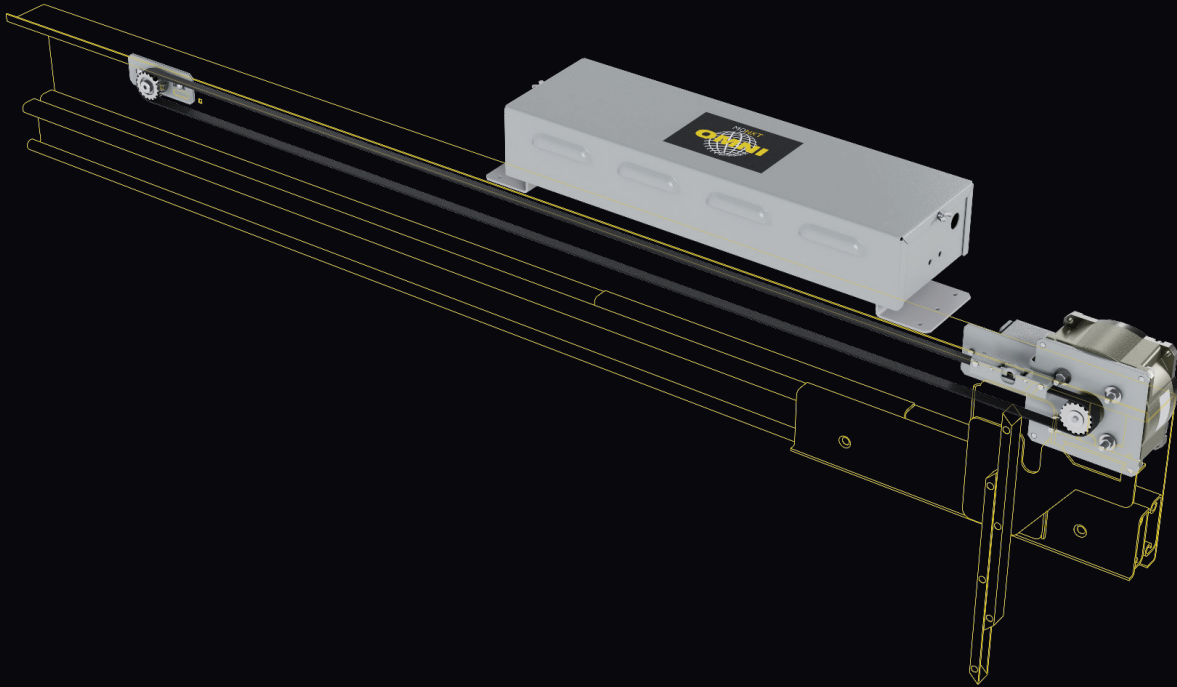


# Conversion Kit: SCHINDLER 3300 to GAL MONXT



## PRE-ENGINEERED GAL CONVERSION KIT for the SCHINDLER 3300 Linear Operator

Built on GAL's latest non-proprietary linear platform, the MONXT, this kit allows you to keep all existing door hangers, clutches, and interlocks of the SCHINDLER 3300.

Kit provides all necessary components to convert the operator to a GAL drive, all under one part number.

### BENEFITS

- CSA B44/ASME A17.1 approved
- 1200 lbs. total panel weight capacity
- Only need to confirm operator model, no surveys!
- Conversion can be performed quickly and easily
- AC Voltage 115/230 VAC
- 1/2 HP motor
- Single operator number for all door styles and opening sizes
- These new kits are built on a universal standard, non-proprietary platform (MONXT)
- The kit contain an easily learned tool and software
- Kit has all you need for the installation from start to finish
- Retain all existing door hangers, clutches, and interlocks

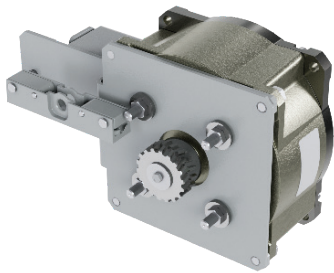


# Conversion Kit: SCHINDLER 3300 to GAL MONXT

## MODERNIZATION KITS

KIT06-4001N - SCHINDLER 3300 TO MONXT

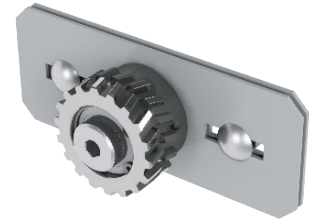
## CONTENTS OF EACH KIT



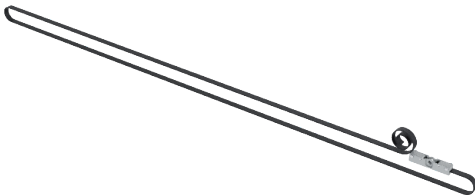
*MOTOR ASSEMBLY w/  
MOUNTING BRACKET*



*MONXT DRIVE ASSEMBLY w/  
PARAMETER UNIT  
230V and 115V*



*IDLER PULLEY  
ASSEMBLY*



*DRIVE BELT ASSEMBLY*



*INSTALLATION  
MANUAL*

**Scan the QR code  
to checkout our  
other Mod Kits**



A VANTAGE Company

50 E. 153rd St.  
Bronx, NY 10451-2104  
Ph: 718.292.9000  
Fax: 718.292.2034

info@gal.com  
www.gal.com  
sales@vantageelevation.com  
www.vantageelevation.com



REGIONAL SERVICE CENTERS

Chicago	877.300.5830
New York	917.336.4597
Miami	877.241.9354
L.A.	877.300.5816
Dallas	469.706.9316
Toronto	888.425.2262