

DIMENSION TABLE	
DOOR OPENING	E
53-60	26
45-52	22
40-44	18
30-39	14

NOTE:
 LOCK MT'G. SCREWS & KEEPER MT'G. PLATE SCREWS ARE 1/4-20 THREAD
 REINFORCEMENT MT'G SCREWS ARE 10-32 THREAD

CLOSERS NOT INCLUDED.
 MUST BE ORDERED SEPARATELY

FOR OTHER DIMS CONTACT GAL BEFORE PURCHASE

DRAWING FOR D.O. 30-60" WDE
 DOOR HEIGHT UP TO 87" TALL
 CAR DOOR HEIGHT = HATCH DOOR HEIGHT

CONTACT GAL ENGINEERING
 IF OTHERWISE TO EVAL IF:
 1. CUSTOM PRINTS ARE REQUIRED
 2. THIS KIT IS NOT APPROPRIATE FOR EXISTING CONDITIONS

REV	DESCRIPTION	DATE	BY

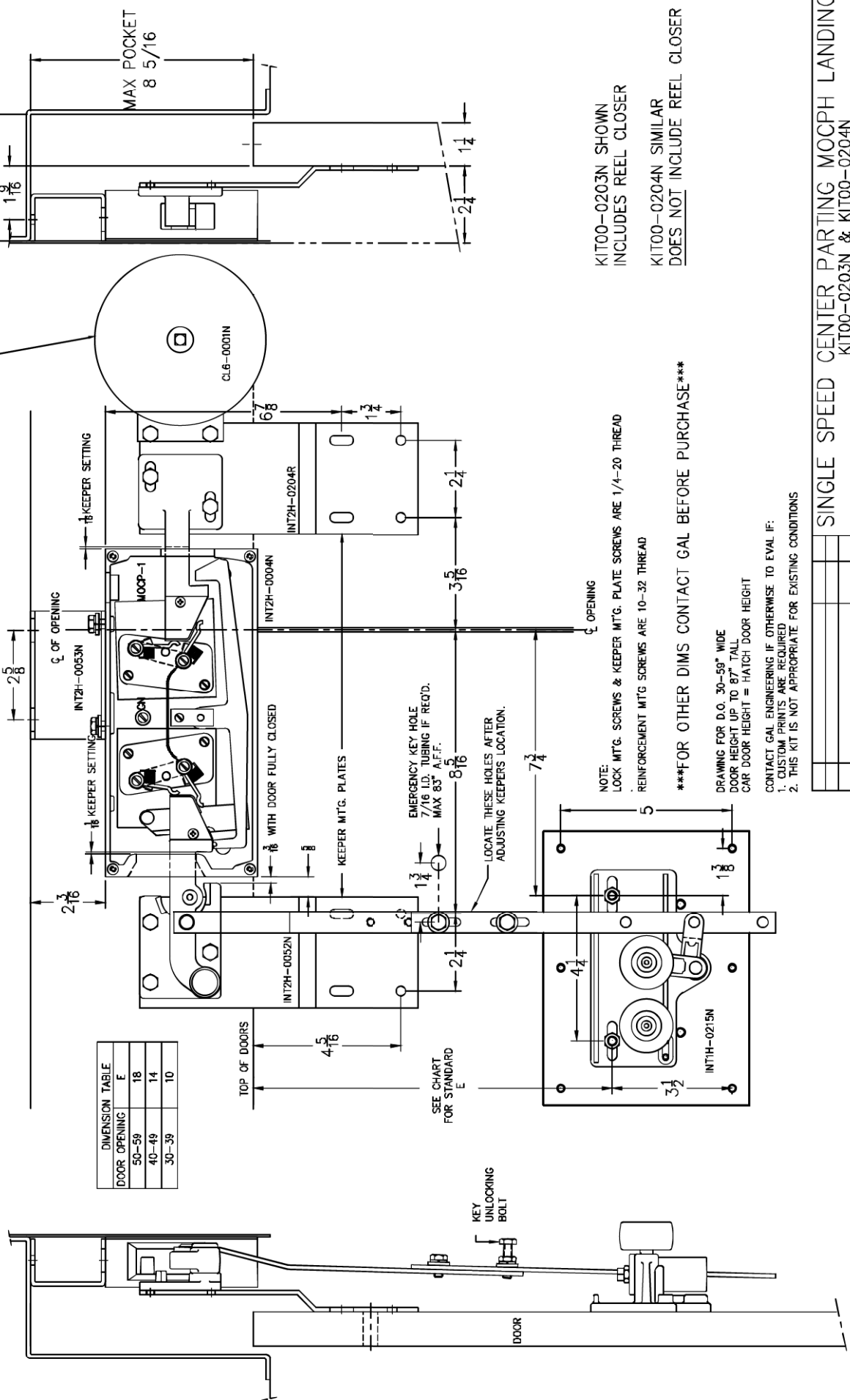
DRAWN BY M. TROY			
ENGINEER A. GOODWIN			
DATE 3/08/21	SIZE A		
SHEET 1 OF 1	SCALE 3/8		
PART #			

TWO SPEED MOH LANDING KIT
 KIT00-0201L/R & KIT00-0202L/R

GAL G.A.L. MANUFACTURING COMPANY, LLC.
 50 EAST 153RD STREET, BRONX, NY 10451
 PHONE: 718.292.9000 | FAX: 718.292.2034
 www.GAL.com | info@GAL.com

DOCUMENT No. 7878-2S REV -

ONLY KIT00-0203N HAS REEL CLOSERS
 KIT00-0204N DOES NOT HAVE CLOSERS.



DIMENSION TABLE	
DOOR OPENING	E
50-59	18
40-49	14
30-39	10

KIT00-0203N SHOWN INCLUDES REEL CLOSER
 KIT00-0204N SIMILAR DOES NOT INCLUDE REEL CLOSER

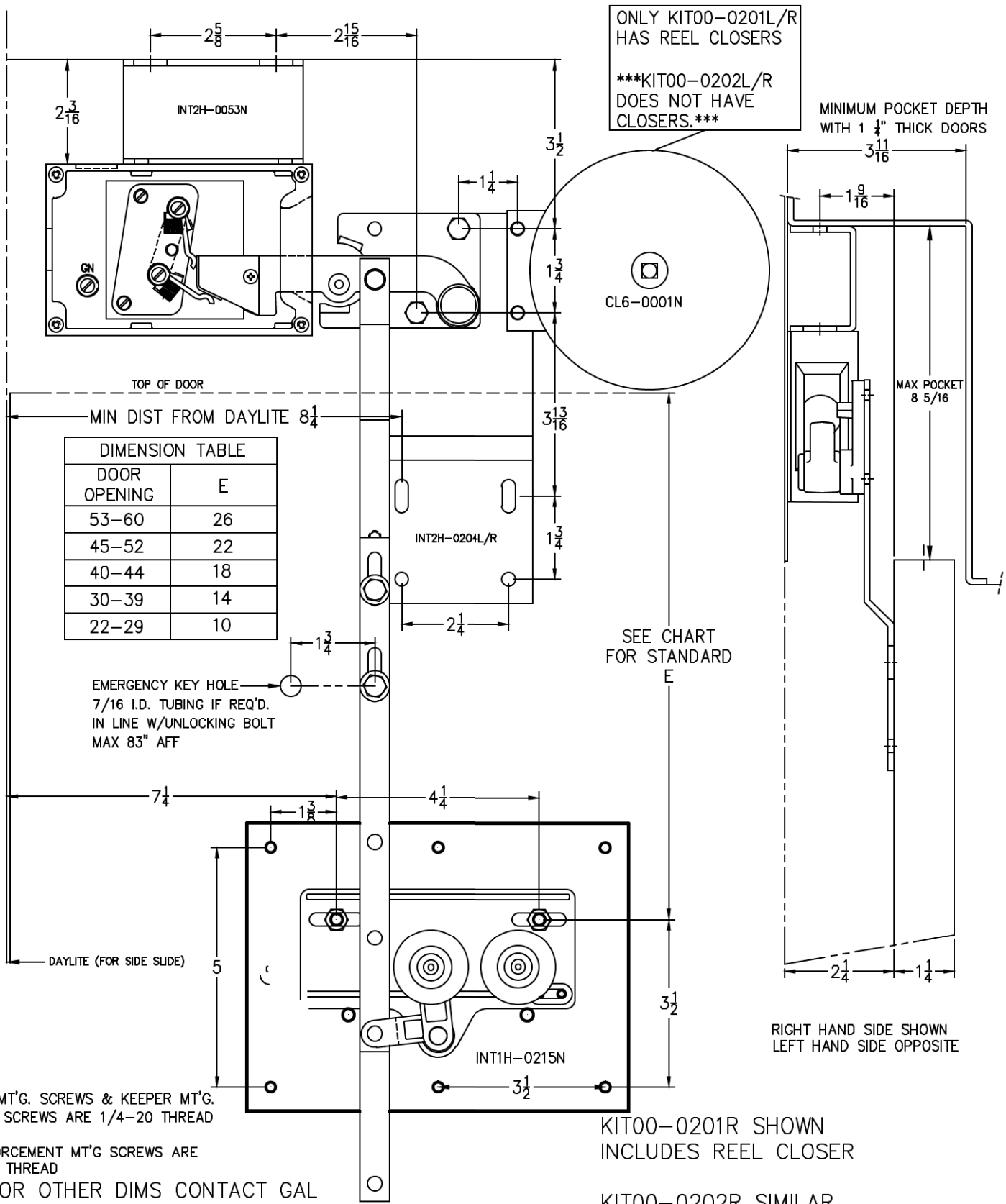
SINGLE SPEED CENTER PARTING MOCPH LANDING KIT
 KIT00-0203N & KIT00-0204N

DRAWN BY: M. TROY
 ENGINEER: A. GOODWIN
 DATE: 3/08/21
 SHEET 1 OF 1
 SCALE: 1/4"

REV: DESCRIPTION DATE BY

DOCUMENT No. 7878-CP

GAL MANUFACTURING COMPANY, LLC.
 50 EAST 153RD STREET, BRONX, NY 10451
 PHONE: 718.292.9000 | FAX: 718.292.2034
 www.GAL.com | info@GAL.com




DIMENSION TABLE

DOOR OPENING	E
53-60	26
45-52	22
40-44	18
30-39	14
22-29	10

NOTE:
 LOCK MT'G. SCREWS & KEEPER MT'G. PLATE SCREWS ARE 1/4"-20 THREAD
 REINFORCEMENT MT'G SCREWS ARE 10-32 THREAD
 FOR OTHER DIMS CONTACT GAL BEFORE PURCHASE
 DRAWING FOR D.O. 22"-60" WIDE
 DOOR HEIGHT UP TO 87" TALL
 CAR DOOR HEIGHT = HATCH DOOR HEIGHT

CONTACT GAL ENGINEERING
 IF OTHERWISE TO EVAL IF:
 1. CUSTOM PRINTS ARE REQUIRED
 2. THIS KIT IS NOT APPROPRIATE FOR EXISTING CONDITIONS

SINGLE SPEED MOH LANDING KIT KIT00-0201L/R & KIT00-0202L/R			
DRAWN BY M. TROY		ENGINEER A. GOODWIN	
DATE 3/08/21		SIZE A	
SHEET 1 OF 1		SCALE 3/8	
PART #		DOCUMENT No.	
REV	DESCRIPTION	DATE	BY


G.A.L. MANUFACTURING COMPANY, LLC.
 50 EAST 153RD STREET, BRONX, NY 10451
 PHONE: 718.292.9000 | FAX: 718.292.2034
 www.GAL.com | info@GAL.com

DOCUMENT No. **7878-SS** REV **-**