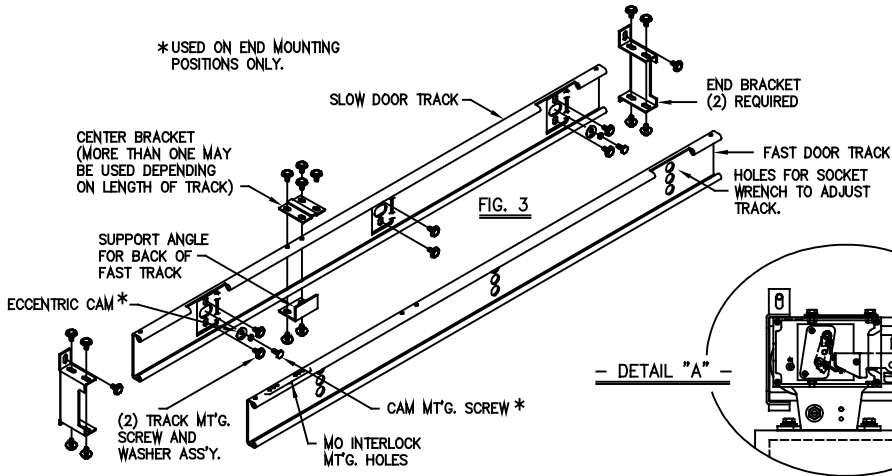


*USED ON END MOUNTING POSITIONS ONLY.



- WARNING -
G.A.L. PROPRIETARY INFORMATION
REPRODUCTION AND/OR USE OF ALL OR ANY PART OF THIS (THESE) PAGE(S) OR DRAWING(S) OR THE INFORMATION HEREIN, WITHOUT THE EXPRESS PERMISSION OF G.A.L. MANUFACTURING CORPORATION IS STRICTLY PROHIBITED BY LAW.
- VIOLATORS WILL BE PROSECUTED -

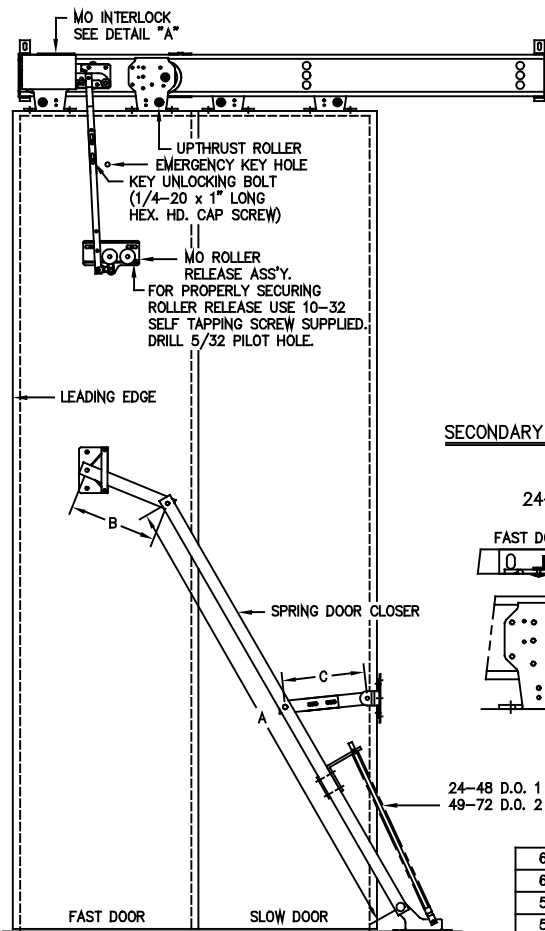
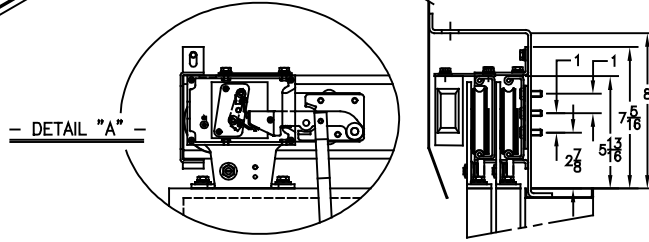
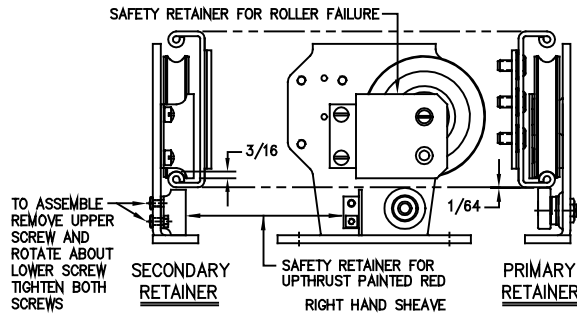


FIG. 1

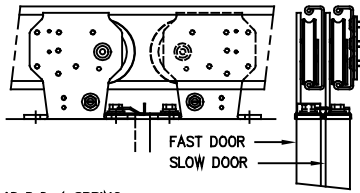
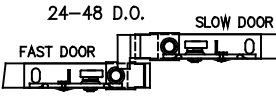
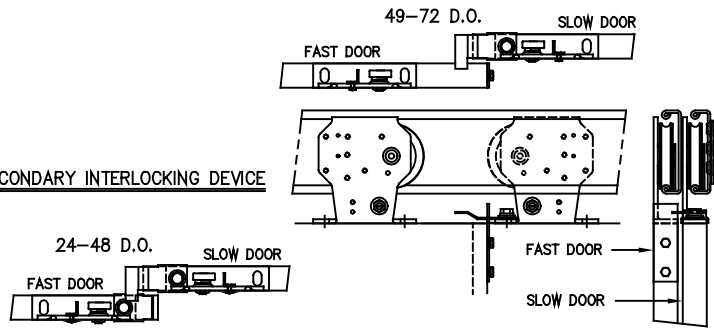
36 x 84 DOOR OPENING SHOWN
RIGHT HAND SHOWN
LEFT HAND OPPOSITE

INSTALLATION INSTRUCTIONS

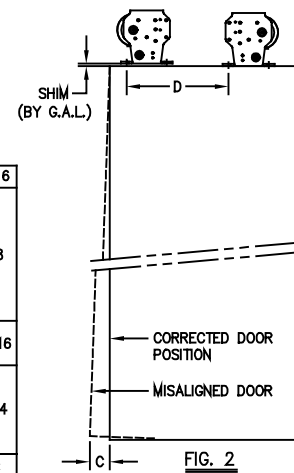
- 1.- REMOVE PAINT FROM TRACK SURFACE WHERE THE HANGER ROLLERS WILL RUN.
- 2.- MOUNT SLOW SPEED TRACK TO HEADER AND SET ECCENTRIC CAM IN LOWEST POSITION HAND TIGHTEN ALL SCREWS.
- 3.- HANG SLOW SPEED DOOR AND ROTATE ECCENTRIC CAM TO RAISE DOOR TO REQUIRED SILL CLEARANCE, ADJUST UP THRUST ROLLERS TO CLEAR TRACK BY APPROXIMATELY 1/64 INCH.
- 4.- CHECK DOOR ALIGNMENT IN OPENED AND CLOSED POSITION AND CORRECT PER FIG. 2 IF REQUIRED READJUST SLOW SPEED TRACK.
- 5.- TIGHTEN ALL SCREWS.
- 6.- MOUNT FAST SPEED DOOR TRACK.
- 7.- MOUNT FAST SPEED DOOR, CHECK DOOR ALIGNMENT AND CORRECT PER FIG.2
- 8.- TIGHTEN ALL SCREWS.



SECONDARY INTERLOCKING DEVICE



TO CORRECT DOOR MISALIGNMENT



67-72	76	17	15 1/2
61-66	72	16	14
55-60	72	14	12 1/2
52-54	72	11	11
49-51	60	11	9 3/4
46-48	52	12	10 1/4
41-44	48	10 1/2	9 1/4
36-40	48	9	8 1/4
28-35	42	9	7
26-27	42	7 1/2	7 1/4
25	42	7 1/2	5 3/4
24	42	7 1/2	5 3/8
DOOR OPNG.	A	B	C

26 1/2	1/16
24 1/2	
22 1/2	
20 1/2	1/8
18 1/2	
16 1/2	
14 1/2	
12 1/2	3/16
10 1/2	
8 1/2	
8	1/4
7 1/2	
7	
D	C

THIS TABLE IS BASED ON A 1/32 SHIM PLACED BETWEEN THE SHEAVE AND THE TOP OF THE DOOR.

G.A.L. MANUFACTURING CORP.
50 E. 153rd STREET BROOK, N.Y. 10461

TWO SPEED HATCH DOOR ASSEMBLY
TYPE "A" HANGER WITH SPRING DOOR CLOSER 24-72 D.O.

SCALE 5/64 DATE 11-3-94

DWG. BY 8252

No. REVISION DATE/CHK. CHK. BY