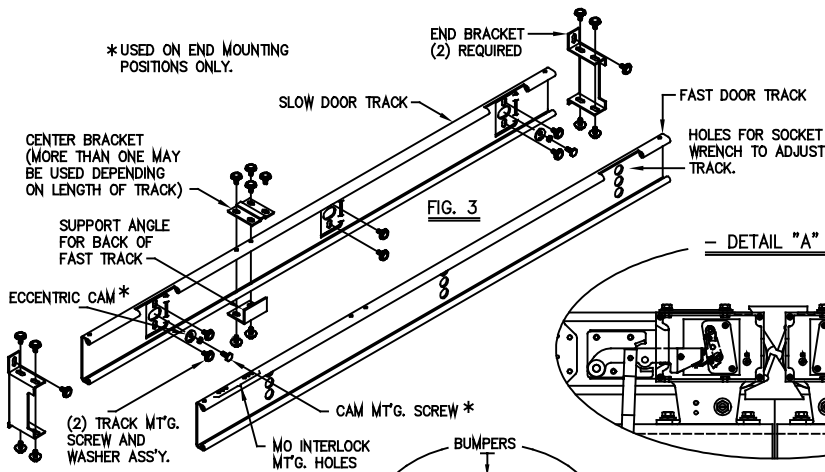


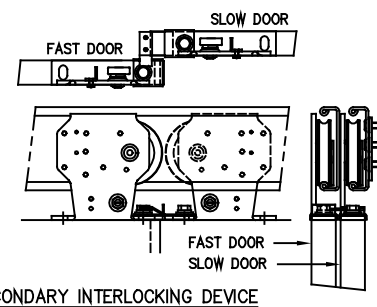
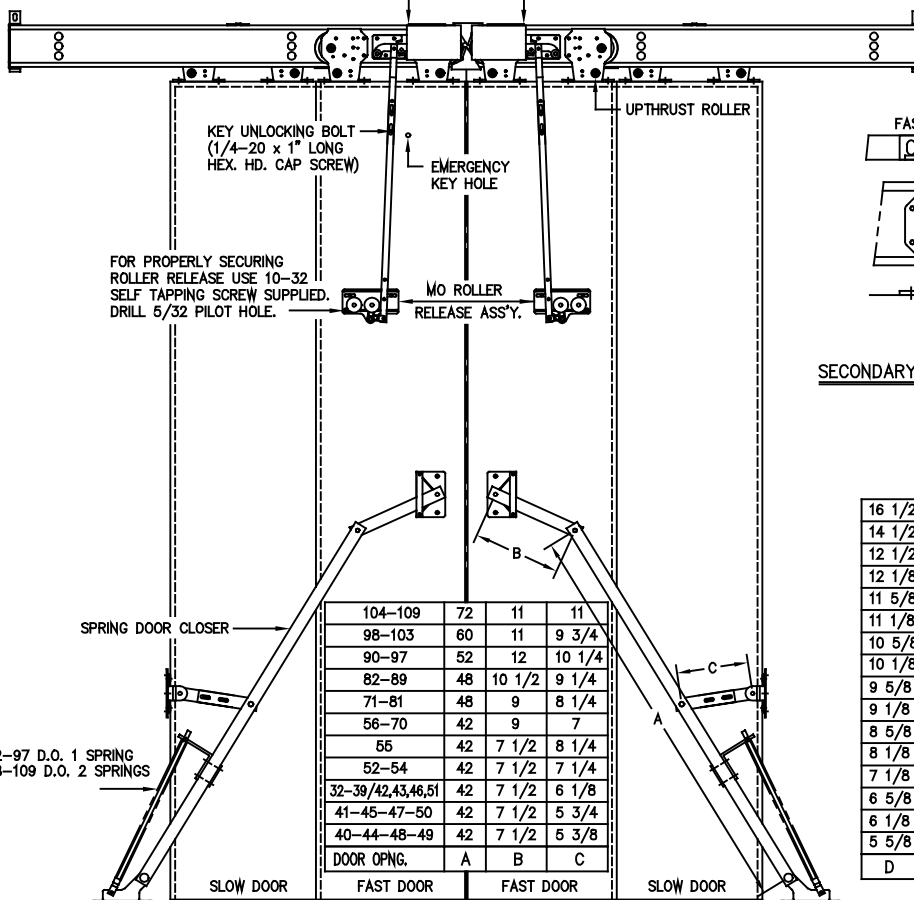
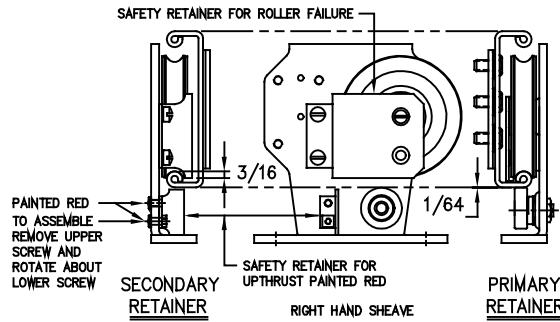
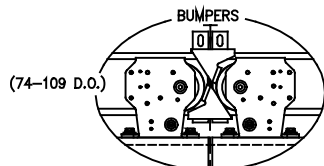
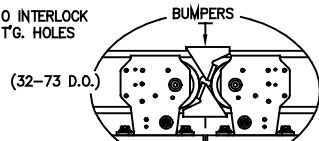
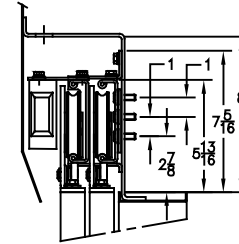
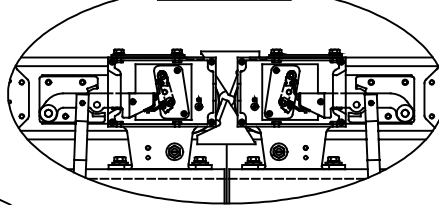
*USED ON END MOUNTING POSITIONS ONLY.



- WARNING -
G.A.L. PROPRIETARY INFORMATION
REPRODUCTION AND/OR USE OF ALL OR ANY PART OF THIS (THESE) PAGE(S) OR DRAWING(S) OR THE INFORMATION HEREIN, WITHOUT THE EXPRESS PERMISSION OF G.A.L. MANUFACTURING CORPORATION IS STRICTLY PROHIBITED BY LAW.
- VIOLATORS WILL BE PROSECUTED -

FIG. 3

- DETAIL "A" -



TO CORRECT DOOR MISALIGNMENT

16 1/2	1/8
14 1/2	
12 1/2	
12 1/8	
11 5/8	
11 1/8	3/16
10 5/8	
10 1/8	
9 5/8	
9 1/8	
8 5/8	1/4
8 1/8	
7 1/8	
6 5/8	
6 1/8	5/16
5 5/8	
D	C

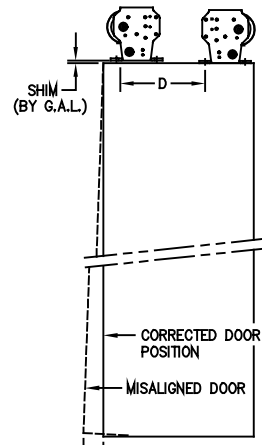


FIG. 2

INSTALLATION INSTRUCTIONS

FIG. 1

- NOTE: SLOW SPEED TRACK COMES ASSEMBLED WITH ALL BRACKETS
- 1.- REMOVE PAINT FROM TRACK SURFACE WHERE THE HANGER ROLLERS WILL RUN.
 - 2.- MOUNT SLOW SPEED TRACK TO HEADER AND SET ECCENTRIC CAM IN LOWEST POSITION HAND TIGHTEN ALL SCREWS.
 - 3.- HANG SLOW SPEED DOOR AND ROTATE ECCENTRIC CAM TO RAISE DOOR TO REQUIRED SILL CLEARANCE, ADJUST UPTHRUST ROLLERS TO CLEAR TRACK BY APPROXIMATELY 1/64 INCH.
 - 4.- CHECK DOOR ALIGNMENT IN OPENED AND CLOSED POSITION AND CORRECT PER FIG. 2 IF REQUIRED READJUST SLOW SPEED TRACK.
 - 5.- TIGHTEN ALL SCREWS.
 - 6.- MOUNT FAST SPEED DOOR TRACK.
 - 7.- MOUNT FAST SPEED DOOR, CHECK DOOR ALIGNMENT AND CORRECT PER FIG. 2
 - 8.- TIGHTEN ALL SCREWS.

THIS TABLE IS BASED ON A 1/32 SHIM PLACED BETWEEN THE SHEAVE AND THE TOP OF THE DOOR.

60 x 84 DOOR OPENING SHOWN

G.A.L. MANUFACTURING CORP.
50 E. 153rd STREET BROOK, N.Y. 10461

TWO SPEED CENTER OPENING HATCH DOOR ASSEMBLY			
TYPE "A" HANGER WITH SPRING DOOR CLOSER			
SCALE 5/64		DATE 11-3-94	
DWG. BY		CHK. BY	
No.		8255	