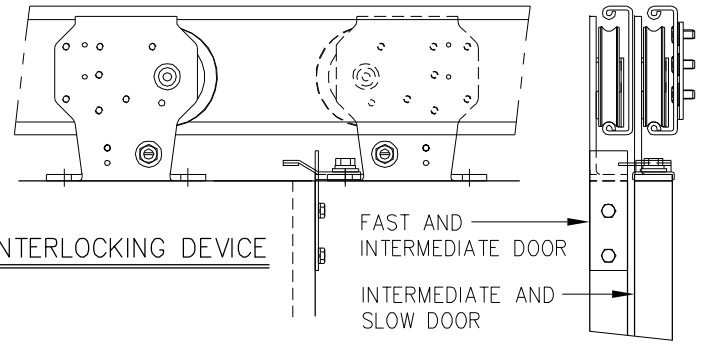
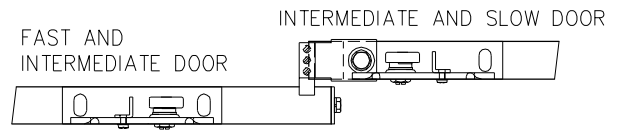
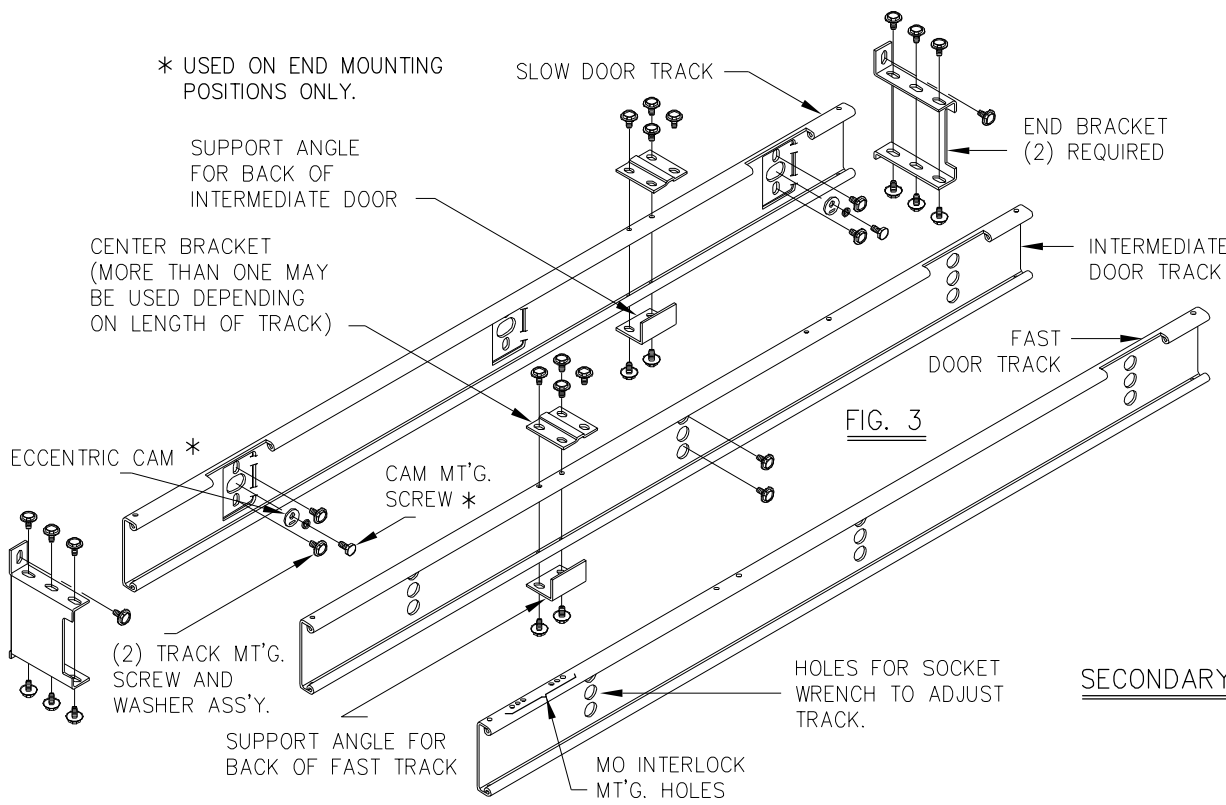


- WARNING -

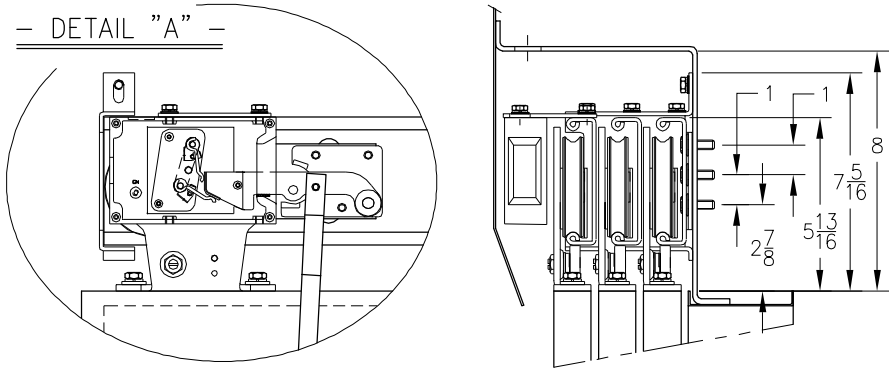
G.A.L. PROPRIETARY INFORMATION

REPRODUCTION AND/OR USE OF ALL OR ANY PART OF THIS (THESE) PAGE(S) OR DRAWING(S) OR THE INFORMATION HEREIN, WITHOUT THE EXPRESS PERMISSION OF G.A.L. MANUFACTURING CORPORATION IS STRICTLY PROHIBITED BY LAW.

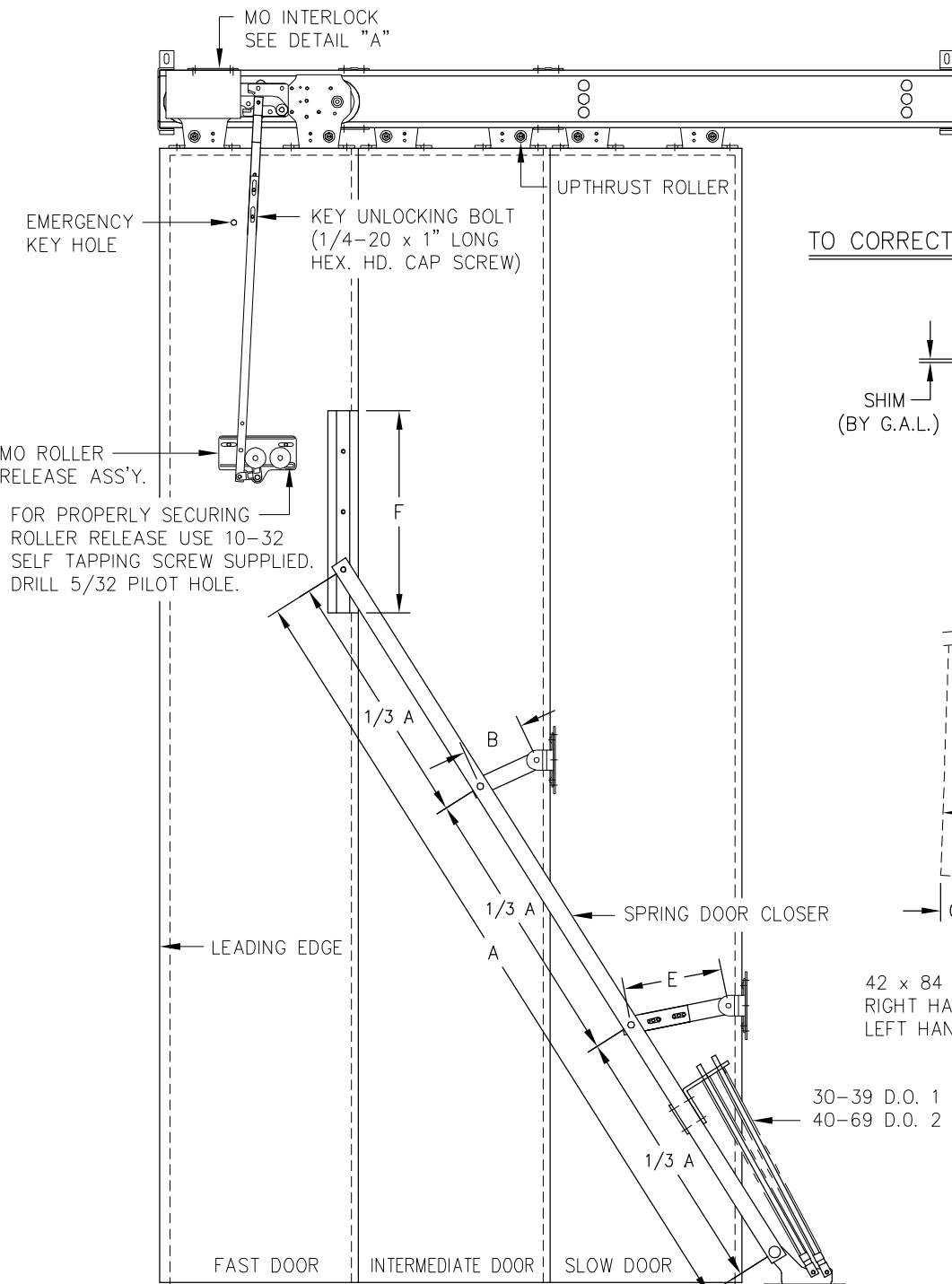
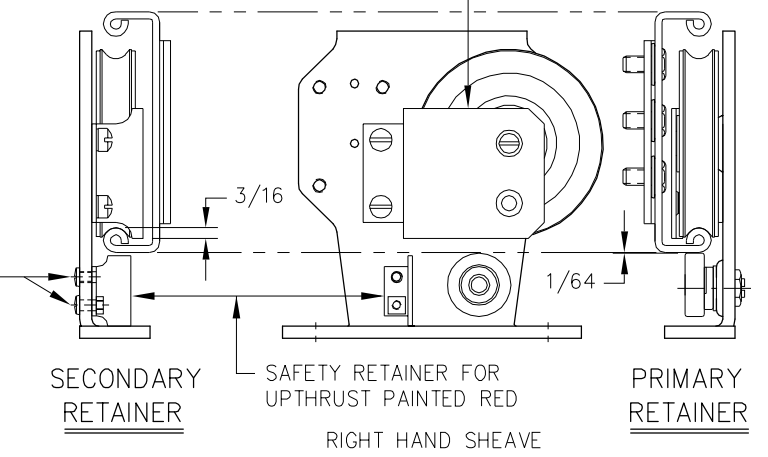
- VIOLATORS WILL BE PROSECUTED -



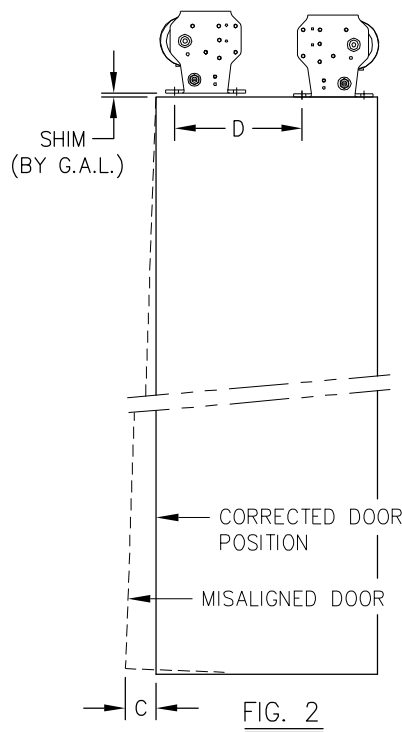
- DETAIL "A" -



SAFETY RETAINER FOR ROLLER FAILURE



TO CORRECT DOOR MISALIGNMENT



42 x 84 DOOR OPENING SHOWN
RIGHT HAND SHOWN
LEFT HAND OPPOSITE

16 1/2	1/8
14 1/2	1/8
12 1/2	3/16
10 1/2	3/16
8 1/2	1/4
6 1/2	5/16
D	C

69	78	8 1/2	13 1/2	22
68	78	8 3/16	13 1/8	22
67	78	8 1/8	13 1/16	22
66	78	7 15/16	12 13/16	22
65	78	7 3/4	12 9/16	22
64	78	7 9/16	12 5/16	20
63	78	7 7/16	12 1/8	20
62	78	7 1/4	11 7/8	20
61	78	7 1/16	11 5/8	20
60	78	6 15/16	11 7/16	20
59	72	7	11 1/4	20
58	72	6 13/16	11	20
57	72	6 5/8	10 3/4	20
56	72	6 1/2	10 9/16	20
55	72	6 5/16	10 5/16	20
54	72	6 1/8	10 1/16	18
53	72	6	9 7/8	18
52	72	5 13/16	9 5/8	18
51	72	5 11/16	9 3/8	18
50	72	5 1/2	9 3/16	18
49	60	5 13/16	9	18
48	60	5 5/8	8 3/4	18
47	60	5 7/16	8 9/16	18
46	60	5 1/4	8 5/16	18
45	60	5 1/8	8 1/16	18
44	60	4 15/16	7 13/16	15
43	60	4 3/4	7 5/8	15
42	60	4 5/8	7 3/8	15
41	60	4 7/16	7 1/8	15
40	60	4 5/16	6 15/16	15
39	54	4 5/16	6 3/4	15
38	54	4 3/16	6 1/2	15
37	54	4	6 1/4	15
36	54	3 7/8	6 1/16	15
35	54	3 11/16	5 13/16	15
34	54	3 9/16	5 11/16	12
33	54	3 7/16	5 11/16	12
32	54	3 3/8	5 11/16	12
31	54	3 1/4	5 5/8	12
30	54	3 3/16	5 5/8	12
D.O.	A	B	E	F

INSTALLATION INSTRUCTIONS

- NOTE: SLOW SPEED TRACK COMES ASSEMBLED WITH ALL BRACKETS
- 1.- REMOVE PAINT FROM TRACK SURFACE WHERE THE HANGER ROLLERS WILL RUN.
 - 2.- MOUNT SLOW SPEED TRACK TO HEADER AND SET ECCENTRIC CAM IN LOWEST POSITION HAND TIGHTEN ALL SCREWS.
 - 3.- HANG SLOW SPEED DOOR AND ROTATE ECCENTRIC CAM TO RAISE DOOR TO REQUIRED SILL CLEARANCE, ADJUST UPTHURST ROLLERS TO CLEAR TRACK BY APPROXIMATELY 1/64 INCH.
 - 4.- CHECK DOOR ALIGNMENT IN OPENED AND CLOSED POSITION AND CORRECT PER FIG. 2 IF REQUIRED READJUST SLOW SPEED TRACK.
 - 5.- TIGHTEN ALL SCREWS.
 - 6.- MOUNT INTERMEDIATE AND FAST SPEED DOOR TRACK.
 - 7.- MOUNT INTERMEDIATE AND FAST SPEED DOOR, CHECK DOOR ALIGNMENT AND CORRECT PER FIG. 2
 - 8.- TIGHTEN ALL SCREWS.

THIS TABLE IS BASED ON A 1/32 SHIM PLACED BETWEEN THE SHEAVE AND THE TOP OF THE DOOR.



G.A.L. MANUFACTURING CORP.
50 E. 153rd STREET BRONX, N.Y. 10451

THREE SPEED HATCH DOOR ASSEMBLY
TYPE "A" HANGER W/SHOE TYPE SPRING DOOR CLOSER

SCALE 5/64 DATE 11-3-94

A	UPDATED "F" DIM	5/24/10	DWG. BY	8254
No.	REVISION	DATE	CHK. BY	