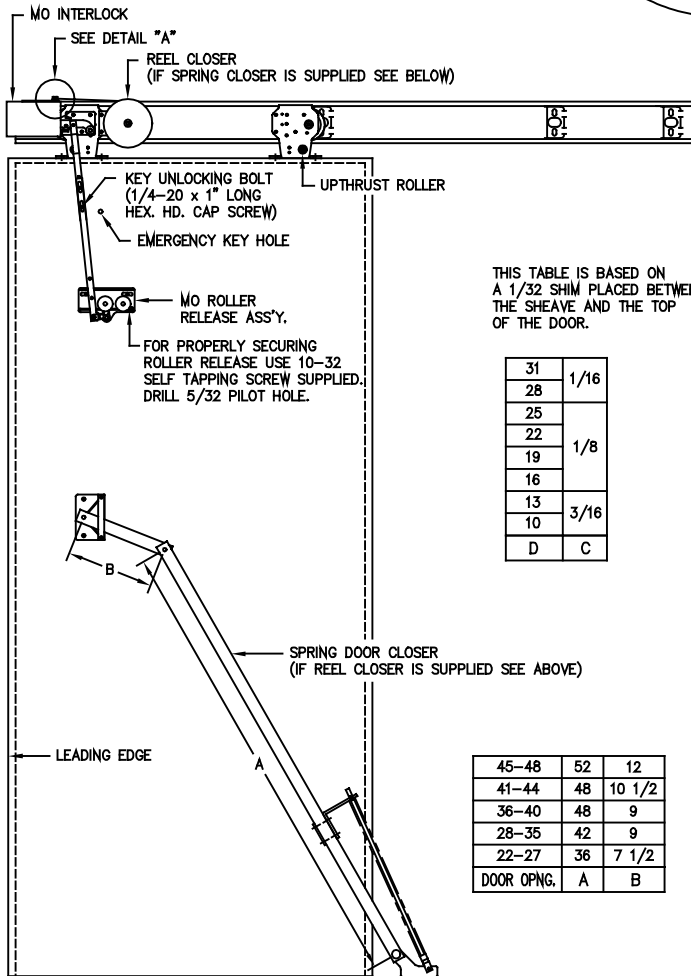
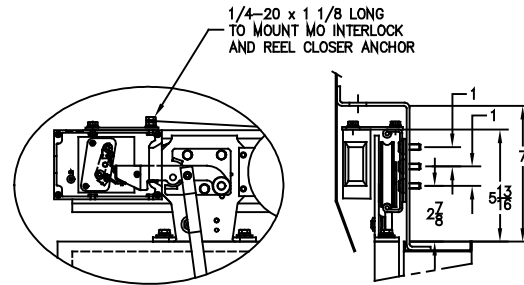


- WARNING -
 G.A.L. PROPRIETARY INFORMATION
 REPRODUCTION AND/OR USE OF ALL OR ANY PART OF THIS (THESE) PAGE(S) OR DRAWING(S) OR THE INFORMATION HEREIN, WITHOUT THE EXPRESS PERMISSION OF G.A.L. MANUFACTURING CORPORATION IS STRICTLY PROHIBITED BY LAW.
 - VIOLATORS WILL BE PROSECUTED -

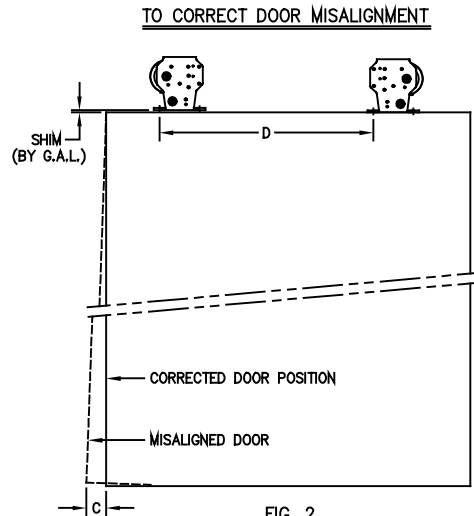
- DETAIL "A" -



THIS TABLE IS BASED ON A 1/32 SHIM PLACED BETWEEN THE SHEAVE AND THE TOP OF THE DOOR.

31	1/16
28	
25	
22	1/8
19	
16	
13	3/16
10	
D	C

45-48	52	12
41-44	48	10 1/2
36-40	48	9
28-35	42	9
22-27	36	7 1/2
DOOR OPNG.	A	B



36 x 84 DOOR OPENING SHOWN
 RIGHT HAND SHOWN
 LEFT HAND OPPOSITE

INSTALLATION INSTRUCTIONS

- 1.- REMOVE PAINT FROM TRACK SURFACE WHERE THE HANGER ROLLER WILL RUN.
- 2.- MOUNT HANGERS TO DOOR WITH UPTHRUST ROLLERS IN LOWEST POSITION.
- 3.- MOUNT TRACK TO HEADER AND SET ECCENTRIC CAM SO THAT THE TRACK IS IN THE LOWEST POSITION. HAND TIGHTEN ALL SCREWS. FIG. 3
- 4.- HANG DOOR ON TRACK AND ROTATE ECCENTRIC CAM TO GIVE DOOR REQUIRED SILL CLEARANCE. ADJUST UPTHRUST ROLLERS TO CLEAR TRACK BY APPROXIMATELY 1/64 INCH.
- 5.- CHECK DOOR MISALIGNMENT IN OPENED AND CLOSED POSITION AND CORRECT IF REQUIRED. FIG. 2
- 6.- IF REQUIRED, READJUST THE ECCENTRIC CAM TO GIVE DOOR REQUIRED SILL CLEARANCE.
- 7.- TIGHTEN ALL SCREWS.

G.A.L. MANUFACTURING CORP.
 60 E. 163rd STREET BROOK, N.Y. 10461

SINGLE SPEED HATCH DOOR ASSEMBLY
 TYPE "A" HANGER WITH REEL OR SPRING DOOR CLOSER 22-48 D.D.

SCALE 5/64 DATE 11-3-94

DWG. BY 8251

No.	REVISION	DATE/CHK.	CHK. BY