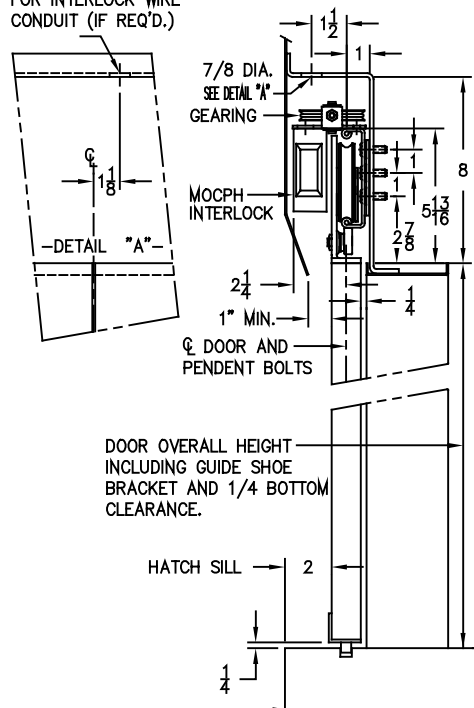
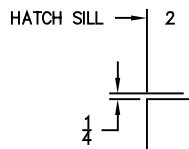


7/8 DIA. HOLE IN TOP OF HANGER HOUSING FOR INTERLOCK WIRE CONDUIT (IF REQ'D.)



DOOR OVERALL HEIGHT INCLUDING GUIDE SHOE BRACKET AND 1/4 BOTTOM CLEARANCE.



- WARNING -  
G.A.L. PROPRIETARY INFORMATION  
REPRODUCTION AND/OR USE OF ALL OR ANY PART OF THIS (THESE) PAGE(S) OR DRAWING(S) OR THE INFORMATION HEREIN, WITHOUT THE EXPRESS PERMISSION OF G.A.L. MANUFACTURING CORPORATION IS STRICTLY PROHIBITED BY LAW.  
- VIOLATORS WILL BE PROSECUTED -

NOTE :  
DRAWINGS ARE BASED ON EQUAL CAR AND HOISTWAY DOOR HEIGHTS ± 1 INCH. IF DOOR HEIGHTS DIFFER NOTIFY G.A.L. AND HOISTWAY DOOR MFG'G.

(36 x 84 D.O. SHOWN)

57-58-59	112	24 (FIG.3)	19	18	42	32
54-55-56	106	24 (FIG.3)	17 1/2	18	(65-66) 42 (64) 36	(65-66) 32 (64) 29
51-52-53	106	24 (FIG.3)	19	18	36	29
48-49-50	100	18 (FIG.3)	17 1/2	(60) 18 (48-49) 14	36	29
45-46-47	94	18 (FIG.3)	16	14	36	29
42-43-44	88	24 (FIG.2)	14 1/2	14	38	25
39-40-41	82	24 (FIG.2)	13	(40-41) 14 (39) 10	38	25
36-37-38	76	12 (FIG.2)	11 1/2	10	38	25
33-34-35	70	12 (FIG.2)	10	10	38	25
30-31-32	64	24 (FIG.1)	8 1/2	10	38	25
DOOR OPNG.	A	B	D	E	H	F

DIMENSION TABLE

DOOR HEIGHT \_\_\_\_\_  
JAMB HEIGHT \_\_\_\_\_



G.A.L. MANUFACTURING CORP.  
50 E. 153rd STREET BRONX, N.Y. 10451

HATCH REINFORCEMENT AND DRILLINGS CENTER OPENING  
TYPE "A" HANGER WITH SPRING DOOR CLOSER 30-59 D.O.

SCALE	3/32	DATE	11-11-94
DWG. BY			
REV. No.			8243